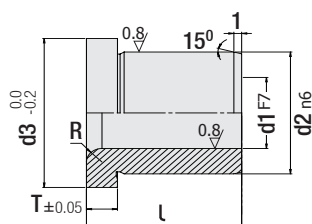


DIN 172, Form A



Code: **G163**

Drill Bush - Headed
DIN 172, Form A



Material: 1.0718
Hardness: 60 HRC

d1 mm	l mm	d2 mm	d3 mm	T mm	R mm
0.5	6	3	6	2	1
1.0	6	3	6	2	1
	9				
1.1	6	4	7	2	1
	9				
1.2	6	4	7	2	1
	9				
1.3	6	4	7	2	1
	9				
1.4	6	4	7	2	1
	9				
1.5	6	4	7	2	1
	9				
1.6	6	4	7	2	1
	9				
1.7	6	4	7	2	1
	9				
1.8	6	4	7	2	1
	9				
1.9	6	5	8	2	1
	9				
2.0	6	5	8	2	1
	9				

d1 mm	l mm	d2 mm	d3 mm	T mm	R mm
2.1	6	5	8	2	1
	9				
2.2	6	5	8	2	1
	9				
2.3	6	5	8	2	1
	9				
2.4	6	5	8	2	1
	9				
2.5	6	5	8	2	1
	9				
2.6	6	5	8	2	1
	9				
2.7	8	6	9	2.5	1
	12				
2.8	8	6	9	2.5	1
	12				
2.9	8	6	9	2.5	1
	12				
3.0	8	6	9	2.5	1
	12				
3.1	8	6	9	2.5	1
	12				
3.2	8	6	9	2.5	1
	12				
3.3	8	6	9	2.5	1
	12				
3.4	8	6	9	2.5	1
	12				
3.5	8	6	9	2.5	1
	12				
3.6	8	6	9	2.5	1
	12				
3.7	8	6	9	2.5	1
	12				
3.8	8	6	9	2.5	1
	12				
3.9	8	6	9	2.5	1
	12				
4.0	8	6	9	2.5	1
	12				
4.1	8	6	9	2.5	1
	12				
4.2	8	6	9	2.5	1
	12				
4.3	8	6	9	2.5	1
	12				

d1 mm	l mm	d2 mm	d3 mm	T mm	R mm
8.0	10	12	15	3	1.5
	16				
	20				
8.5	12	15	18	3	2
	20				
	25				
	12				
9.0	20	15	18	3	2
	25				
	12				
9.5	20	15	18	3	2
	25				
	12				
10.0	20	15	18	3	2
	25				
	12				
10.2	20	15	18	3	2
	25				
	12				
	20				
10.5	20	15	18	3	2
	25				
	12				
11.0	20	15	18	3	2
	25				
	12				
12.0	20	15	18	3	2
	25				
	12				
13.0	28	15	18	3	2
	36				
	16				
14.0	28	15	18	3	2
	36				
	16				
15.0	28	15	18	3	2
	36				
	16				
16.0	28	15	18	3	2
	36				
	16				
17.0	28	15	18	3	2
	36				
	16				
18.0	28	15	18	3	2
	36				
	20				
19.0	36	15	18	3	2
	45				
	20				
20.0	36	15	18	3	2
	45				
	20				
22.0	36	15	18	3	2
	45				
	20				
25.0	36	15	18	3	2
	45				
	20				



Order:
G163. d1 x l

FOR MORE QUALIFIED AND
EXTRA PRECISE DRILLING...

DRILL BUSHES "DIN 172-A & DIN 179-A" NOW AVAILABLE FROM OUR STOCKS!



Code: **G163**



Technical data!

Drill Bushes are often used in metalworking, especially die&mould making and machine tool manufacturing. These bushes are frequently preferred in precision drilling applications and perform a number of important functions.



Code: **G164**



Technical data!

DRILL BUSH - HEADED DIN 172 - FORM A

DRILL BUSH - PLAIN DIN 179 - FORM A

Areas of usage and features of DIN 172 & DIN 179



1. Drilling and Positioning

- It enables holes to be drilled in the correct position and size, especially in the processing of complex parts.
- It is used in applications requiring precision hole machining, especially in the processing of metal parts.



2. Die & Mould-making and Machine Tools Production

- Used in plastic injection moulds, die-casting moulds and other dies.
- Drill Bushes are used in machine tools, especially in milling and turning operations.



3. High Precision and Reproducibility

- DIN 179 & DIN 172 standard is ideal for applications requiring high precision and repeatability.
- These bushings improve part quality by ensuring that the holes are the same size and tolerances every time.



4. Compatibility with Various Materials

- Can be used with a variety of materials such as steel, aluminum, copper and other metal alloys.
- Also compatible with some plastic and composite materials.



5. Durability and Long Life

- Guvenal DIN 179 & DIN 172 bushes are produced from materials with high wear resistance.
- It is designed for long-term use and its life can be further extended with regular maintenance.

"Application Examples"



- Automotive Industry: In the production of engine parts, transmission components and other precision automotive parts.
 - Aerospace and Defense: In the machining of airframes, engine parts and other precision aerospace components.
 - Machinery & Tools Manufacturing: In the production of various machine parts and components.
- Drill bushes play a critical role in many industrial applications where high precision is required and repeatability is important. The correct selection and use of these bushings directly affects the efficiency of production processes and product quality. You can quickly obtain DIN 179 and DIN 172 products in thousands of different sizes with the Guvenal quality assurance label from our stocks.



Guvenal Die & Mould Components | "A Member of Guvenal Corporate Group"



+90 212 501 53 81



info@guvenal.net



www.guvenal.net

